



RALLYE EVENT INFO DOSSIER



RALLYE EVENT

INFO DOSSIER



WHAT THE RALLYE IS ALL ABOUT »

Are you **READY FOR ADVENTURE**? KTM New Zealand is proud to announce our third annual KTM New Zealand Adventure Rallye: Northland 2018!

Open to Orange Adventure Riders with the following eligible KTM bikes: 640, 690, 950, 990, 1050, 1090, 1090R, 1190, 1190R, 1290 & 1290R models. The Rallye is tailored to suit a wide range of rider abilities, from those in their first years of Adventure riding up to seasoned Adventure pros.

For 2018, the Rallye returns to the North Island and takes the Rallye concept to another level with six action packed days of adventure riding, exclusive private land access that will give riders some of the most incredible terrain we've ever had on a Rallye, and a new initiative for 2018 with the introduction of the KTM Ultimate Race Qualifications!

Designed with the V-TWIN KTM Adventure range in mind, as well as the variety of rider abilities, the route will include a mix of tar sealed roads, back country roads, gravel roads, private land access farming trails, and much more!

The KTM NZ Adventure Rallye is about offering a great experience to our **ORANGE** adventure riders - and what better way to do that than with an epic 6-days exploring the best that the stunning Northland and Coromandel regions offer, on your KTM adventure bike. Bring old friends or make new ones, in the spirit of adventure riding, the Rallye is about getting back to the basics. Read on for more . . .

2017 KTM NEW ZEALAND ADVENTURE RALLYE »

Not quite sure what this event is all about, check out our recap video from our second annual KTM New Zealand Adventure Rallye: Southern Alps which was held in December 2017.

[CLICK HERE TO WATCH 2017 EVENT VIDEO »](#)



The KTM logo in white, set against a solid orange rectangular background.

RALLYE EVENT

INFO DOSSIER



FAST FACTS »

What's included . . .

- 6-Days, 2,000km adventure riding
- Lead Riders, Course Markers & GPS Files
- Luggage Support
- Tyre Support Assistance
- Medic & Tech Support
- Backup Vehicle & Sweep Support
- Dinner included every night
- KTM Goody Bag - T-Shirt, Sticker & More
- Event Video, featuring all the highlights
- Event Photographer
- Ride with KTM Pro Riders & Special Guests!

RALLYE FEE:

- \$1395 NZD per rider
- \$895 NZD pillion rider
- Includes everything above
- Accommodation not included

Dates . . .

- SIGN ON & REGISTRATION : Friday, Nov 30th 2018
- RALLYE: Saturday, Dec 1st - Thursday, Dec 6th 2018

Destinations . . .

- Registration & Welcome Dinner // Night 1 - Paihia
- Day 1 // Night 2 - Taipa Beach
- Day 2 // Night 3 - Taipa Beach
- Day 3 // Night 4 - Whangarei
- Day 4 // Night 5 - Thames
- Day 5 // Night 6 - Coromandel Town
- FINAL DAY 6 // Night 7 - Whangamata

Must have . . .

- KTM Adventure Motorcycle, road registered
- Third Party Insurance OR
Comprehensive motorcycle insurance (*highly recommended*)
- Full motorcycle license
- Knobby Tyres
- Minimum 250km Fuel Range



RALLYE EVENT

INFO DOSSIER



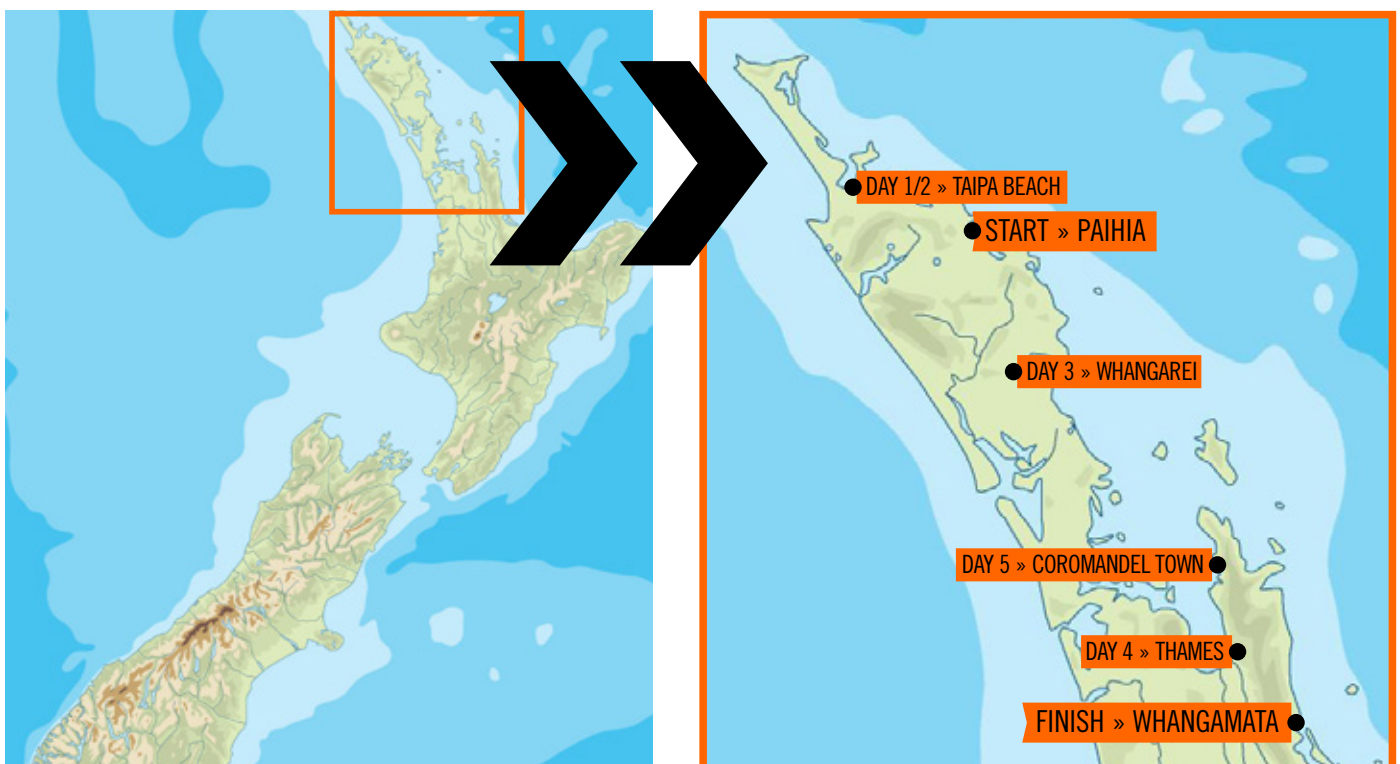
THE ROUTE »

For 2018, the KTM New Zealand Adventure Rallye returns to the North Island - right to the very top! The adventure starts in the iconic Bay of Islands, which features the historic Waitangi Treaty Signing grounds and the first governors residence Maori Waka. The dates of the event have been planned in line with the tides to maximise the best riding opportunities Northland has to offer. White sand beaches, gum fields, Kauri Kingdom forests, pine forests and the famed hard black sand Ninety Mile Beach - all in the first few days!

After two nights in Taipa Beach, the route then sees riders heading back through Whangarei to Chris Birch's backyard, where the final two days will be held on the Coromandel Peninsula with overnights in Thames, Coromandel Town and the final stop in Whangamata.

The aim of the KTM New Zealand Adventure Rallye is to be suitable for all KTM adventure riders - therefore this year the Main Route will be shorter and less technically challenging than previous years routes. Don't think for a second that we are going soft though! The Breakout options will have some serious riding, with our first ever 4 Chili options for the truly brave.

The Main Route will be made up of winding back country roads, gravel roads and some easy, well formed off road tracks. Riders taking on the off road break outs can expect sand, mud, hills, mountains, farm land and some real challenges. These Breakout Route options will be available daily as just that - breakout sections from the Main Route - and are for those riders wishing to tackle more advanced and challenging terrain. These will be **ADVANCED** routes and therefore should not be taken unless you feel you are capable. Just watch some of last years' video footage if you think we are exaggerating!



RALLYE EVENT

INFO DOSSIER



NAVIGATION INFORMATION »

The Rallye is tailored to suit a range of rider abilities, from those starting out in their first year or two of adventure riding, to seasoned Adventure pros. In order to cater for this variety of levels, each day's course can be traversed in your own time, at your own pace, with two route options available daily - the Main Route and Breakout Routes.

Two lead riders depart before the group each morning to ensure the tracks are clear, plus sweep riders bring up the tail end of the pack to assist with any issues that may arise throughout the day. A detailed route sheet for each day will be supplied at the nightly rider briefings, however for riders the main source of navigation comes in the form of GPS files, supplied prior to the Rallye. Therefore it is highly recommended that riders have a GPS unit to navigate for the event.

Riders are free to depart each morning between 8.00-9.00am, in their own time and on their own agenda. There will be Points of Interest on each days route sheet, so riders can stop and enjoy these along the way, as well as suggested breakfast and lunch stops.



RALLYE EVENT

INFO DOSSIER



RALLYE SUPPORT »

LUGGAGE SUPPORT. Every rider will be allowed to place one bag (roll-bag or pack) in the KTM Luggage Truck, which will be carried for them between each destination.

TECH SUPPORT. We will have KTM New Zealand mechanics available to assist with any issues that may arise along the way that you cannot fix yourselves.

TYRE SUPPORT. We will have a Tyre Support service available for riders at the Rallye, for those who wish to get a new tyre or tyres fitted during the event, or assistance with any tyre issues.

GENUINE PARTS SUPPORT. All riders are advised to bring spare parts along, however due to unforeseen circumstances that may arise when adventure riding, we will have Genuine KTM Spare Parts available for riders to purchase throughout the Rallye.

MEDIC SUPPORT. We will have a Medic Support team on the Rallye to assist with any rider injuries.

More information on all the provided support will be given to those who register for the event in the form of a REGISTERED RIDER DOSSIER.



RALLYE EVENT

INFO DOSSIER



RALLYE ITINERARY »

Friday, Nov 30th 2018	From 2.00pm » Rider Registration <i>Copthorne Resort Bay of Islands, Paihia</i> 6.00pm » Welcome Dinner and Riders Briefing
Saturday, Dec 1st 2018	After 8.00am » Day 1 Start Time After 4.00pm » Arrive at TAIPA BEACH 6.30pm » Nightly Riders Briefing & Dinner
Sunday, Dec 2nd 2018	After 8.00am » Day 2 Start Time After 4.00pm » Arrive back at TAIPA BEACH (Day 2 Route is a loop) 6.30pm » Nightly Riders Briefing & Dinner
Monday, Dec 3rd 2018	After 8.00am » Day 3 Start Time After 4.00pm » Arrive at WHANGAREI 6.30pm » Nightly Riders Briefing & Dinner
Tuesday, Dec 4th 2018	After 8.00am » Day 4 Start Time Midday » Arrive at THAMES Afternoon » ULTIMATE RACE QUALIFICATIONS 6.30pm » Nightly Riders Briefing & Dinner
Wednesday, Dec 5th 2018	After 8.00am » Day 5 Start Time After 4.00pm » Arrive at COROMANDEL TOWN 6.30pm » Nightly Riders Briefing & Dinner
Thursday, Dec 6th 2018	After 8.00am » Day 5 Start Time After 4.00pm » Arrive at WHANGAMATA 6.30pm » Wrap-Up Dinner & Presentations
Friday, Dec 7th 2018	AM » Riders make their way home!



RALLYE EVENT

INFO DOSSIER



ACCOMMODATION & DINNERS »

It will be up to you, the rider, to book your preferred overnight accommodation. Once you register, you will receive a **REGISTERED RIDER DOSSIER: ACCOMMODATION** which will outline all the suggested accommodation venues and where the nightly Riders Briefing and Dinners will take place, which we call the "Bivouac". Our overnight destinations might be a little more accommodating than the actual Bivouac at the Dakar though!

BIVOUAC. Each night we will have one particular location as the Bivouac. This is where your luggage will be available to collect each afternoon, as well as the dinner destination and the location of the nightly riders briefing and social revelry. The suggested accommodation locations are all within either walking distance or a short ride from the Bivouac every night.

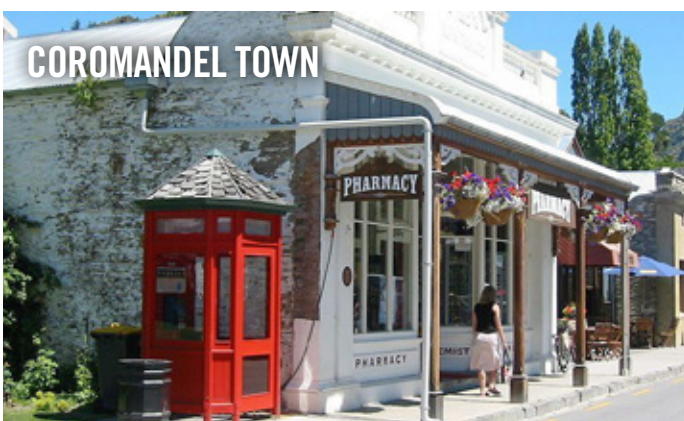
DINNERS. Are included in the Rallye price every night! From the Welcome Dinner on the first night until the final Wrap-Up Dinner. So after a long day on the bike, you don't need to worry about having to hunt down some chow - we've got it sorted for you.



COPTHORNE RESORT BAY OF ISLANDS



TAIPA BEACH



COROMANDEL TOWN



WHANGAMATA



KTM ADVENTURE RALLYE RIDERS OFFERED THE ULTIMATE RACE OPPORTUNITY

KTM ULTIMATE RACE



KTM New Zealand is excited to announce the inclusion of a KTM ULTIMATE RACE QUALIFICATION as part of the 2018 KTM New Zealand Adventure Rallye!

WHAT IS THE KTM ULTIMATE RACE? »

This new initiative has been introduced to bring together the global KTM Adventure Rallye communities. With six KTM Adventure Rallye events now taking place all over the world, in 2018 two lucky Rallye Riders from each country will qualify to take part in the KTM ULTIMATE RACE . . .

That's right - 12 lucky Rallye Riders will win the opportunity to race each other in a Dakar Series event at the Merzouga Rally 2019 in Morocco! The fully supported ride for each person includes flights, accommodation, entry fees, as well as a KTM 790 ADVENTURE R to race on, with a full race service. Competitors will be given a fantastic opportunity to be coached by some of the world's finest and fastest offroad bikers (including yours truly Chris Birch!) and to be treated like Factory supported riders during the trip in which they will negotiate some of the most epic terrain. AND - the winner of the KTM Ultimate Race will receive an incredible prize of a 790 ADVENTURE R and 2 VIP packages for the Dakar Rally!

What does this mean for you? The KTM Ultimate Race Qualification is open to V-Twin riders on the 2018 KTM New Zealand Adventure Rallye. Meaning if you partake in the Rallye, YOU could be one of the lucky two New Zealanders who qualify for KTM ULTIMATE RACE!

More information on the KTM Ultimate Race Qualification process will be released to the Registered Riders. You can find more information on the KTM Ultimate Race on the KTM Adventure Rally worldwide microsite here:

<http://www.ktm-adventure-rally.com/en/ktm-ultimate-race/>

[WATCH THE PREVIEW VIDEO HERE](#)



RALLYE EVENT

INFO DOSSIER



So . . .

WANT TO BE A PART OF THIS ADVENTURE? »

Space is limited to 100 riders! Once you register, you will receive the first REGISTERED RIDER DOSSIER, outlining further information to get your Rallye planning started.

We hope you can be a part of the third annual KTM New Zealand Adventure Rallye: Northland 2018!

